



**ALASKA DIVISION OF HOMELAND SECURITY &
EMERGENCY MANAGEMENT**



SITUATION REPORT 22-335 • DECEMBER 01, 2022

Toll-Free 1.800.478.2337

Anchorage Area 907.428.7000

SEOC 907.428.7100

<p><u>SEOC Preparedness Level</u> Level 1 – Routine Operations</p>	<p>http://ready.alaska.gov</p>	<p><u>National Terrorism Advisory System:</u> Read the NTAS Bulletin here</p>
<p><u>Maritime Security (MARSEC)</u> Level:1-Minimum Appropriate Security Measures</p>	<p>WHO Novel Coronavirus Pandemic (COVID-19): 2019 Novel Coronavirus</p>	<p><u>Alaska Military Installation Force Protection Level:</u> FPCON Bravo</p>

(Significant changes from previous situation reports are in red.)

Significant Issues:

The SEOC is still actively working with the Village of Stebbins to make sure their fuel, electricity, food and other supply needs are met post store fire and will continue to address any mass care needs as they arise.

State of Alaska Department of Health (DOH)

The DOH is leading the State of Alaska COVID-19 Recovery, supported by the SEOC and other state departments as required.

For current COVID-19 information, see:

<https://covid19.alaska.gov/>

<https://www.cdc.gov/coronavirus/2019-ncov/index.html>

NTAS Bulletin

To read current or expired advisories, click the link below:

<https://www.dhs.gov/national-terrorism-advisory-system>

Travel Alerts and Conditions

For current driving conditions dial 511 or link to <https://511.alaska.gov/>

Barry Arm Landslide / Tsunami Risk

For the latest information on the Barry Arm Landslide and Tsunami risk, click here:

[DGGs Barry Arm Landslide and Tsunami Hazard](#)

Recent Earthquakes

USGS Earthquake Information: <http://earthquake.usgs.gov/>

National Tsunami Warning Center: <http://tsunami.gov/>

Alaska Volcanoes

Great Sitkin Alert Level: **Watch** and Aviation Color Code: **Orange**

Cleveland Alert Level: **Advisory** and Aviation Color Code: **Yellow**

Pavlof Alert Level: **Watch** and Aviation Color Code: **Orange**

Semisopchnoi Alert Level: **Advisory** and Aviation Color Code: **Yellow**

Takawangah Alert Level: **Advisory** and Aviation Color Code: **Yellow**

For Alaska Volcano updates, go to: <https://www.avo.alaska.edu/>

Air Quality Index (AQI) Advisories

For the most up to date Air Quality Index Advisories:

<http://dec.alaska.gov/Applications/Air/airtoolsweb/Home/Index>

Spills of Oil and Hazardous Substances

The ADEC Spill Prevention and Response page is located at:

<http://dec.alaska.gov/spar/ppr/spill-information/response/>

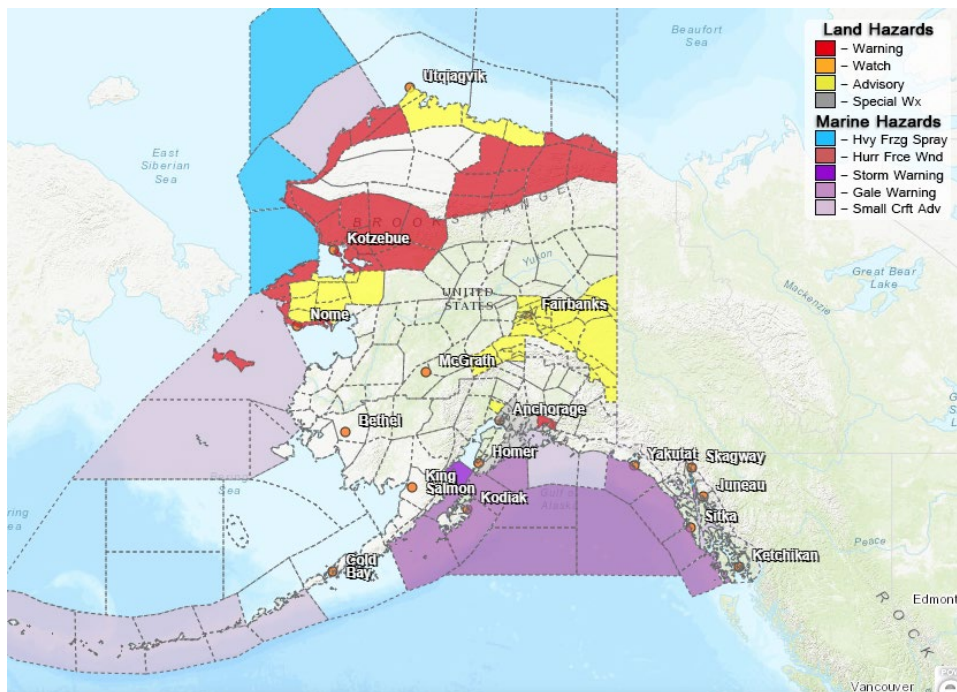
Alaska Cyber Security Information

State Employees may sign up for cyber security notifications and alerts at

<https://oit.alaska.gov/security>

CISA-Cybersecurity Services and Tools: www.cisa.gov/free-cybersecurity-services-and-tools

Significant Weather:



The following High Wind Warnings have been issued:

- Valdez and Thompson Pass through 9:00PM this evening. Northeast winds from 40 to 50 mph with gusts up to 75 mph expected.

The Following Winter Storm Warnings have been issued:

- **Baldwin Peninsula and Selawik Valley from 6:00PM this evening through 6:00AM Saturday. Heavy mixed snow and ice precipitation expected with total accumulation of 2-4 inches.**

- Southern Seward Peninsula Coast from 6:00PM this evening through 6:00AM Saturday. Heavy mixed precipitation expected. Total snow accumulations of 1 to 3 inches and ice accumulations of up to one two tenths of an inch.
- Western Arctic Coast from 3:00PM this afternoon through 6:00AM Saturday. Heavy mixed precipitation expected. Total snow accumulations of up to one inch and ice accumulations of up to one tenth of an inch. Winds gusting as high as 45 mph.
- St. Lawrence Island and Bering Strait Coast until 3:00PM Friday. Heavy snow with periods of blizzard conditions and winds gusting up to 50 mph.
- Chukchi Sea Coast through 6:00PM Saturday. Heavy snow with blizzard conditions with up to 8 inches of snow accumulation, 50 mph gusting winds and limited visibility.
- Upper and Lower Kobuk and Noatak Valleys from 6:00PM this evening to 6:00AM Saturday. Heavy snow and blowing snow expected with accumulation of 8+ inches and winds up to 40 mph.
- Northwestern and Northeastern Brooks Range through 3:00PM Saturday. Heavy snow and blowing snow expected with accumulation of 8+ inches and winds up to 40 mph.
- Central and Eastern Beaufort Sea Coast through 3:00PM Saturday. Heavy mixed precipitation. Additional snow accumulations of 5 to 8 inches and ice accumulations of up to one tenth of an inch and winds gusting as high as 60 mph.

The following Winter Weather Advisories have been issued:

- Northern Arctic Coast from 9:00PM this evening through Midnight Friday. Mixed precipitation expected. Total snow accumulations of up to one inch and ice accumulations of a light glaze and winds gusting as high as 40 mph.
- Western Prince William Sound: Areas of blowing snow and reduced visibilities possible along Turnagain Arm and across Portage Valley through Thursday.
- Northern and Interior Seward Peninsula from 6:00PM this evening through 6:00AM Saturday. Snow and blowing snow with accumulation up to 6 inches with wind gusts of 30 mph expected.

A Flood Advisory has been issued for the Susitna Valley until 4:30PM Friday. Cold temperatures have caused a rapid freeze up and ice movement on Willow Creek and area tributaries.

For more information and the most current weather, Watches / Warnings / Advisories go to: <http://www.weather.gov/arh>.

Avalanche Forecast:



Avalanche conditions moderate around Valdez below 2000 ft and Skagway above 1,500 ft.

Check the Avalanche Forecast Center closest to your area for the most up to date information on avalanche potential. <https://alaskasnow.org> or <https://www.weather.gov/afc/avalancheweather>

The Next Situation Report: will be 02 December 2022. A significant change in the situation or the threat level will prompt an interim report. This report is posted on the internet at <https://ready.alaska.gov/sitrep>.

To register for email distribution, go to <http://list.state.ak.us/mailman/listinfo/dhsem.situation.report>. Direct questions regarding this report to the SEOC at 907-428-7100 or seoc@alaska.gov